

OPERATING INSTRUCTIONS

K2210 – COLLAB Wireless Box/Dash Display Module

KOOIMA AG

COLLAB™

1-800-522-8874

PATENT PENDING



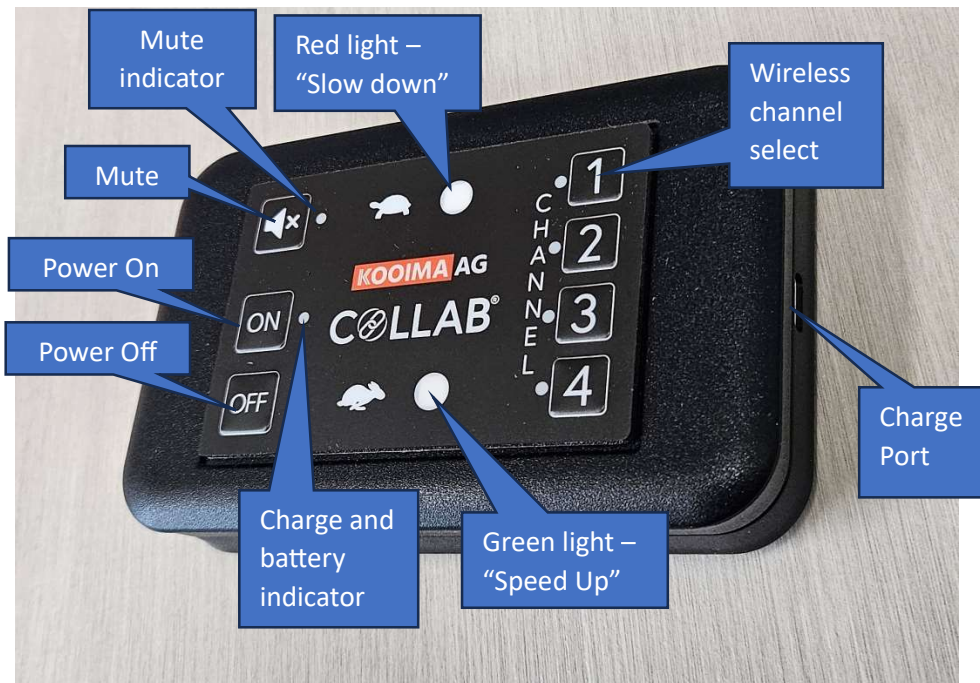
This wireless box is intended to go inside the cab of the silage truck or tractor.

It wirelessly communicates with the Collab control box in the harvester and lets the silage truck driver more easily see and hear the signals from the harvester. A Collab control box must be installed in the harvester for this wireless box to function correctly.

The approximate range of the wireless signal is 150' but varies depending on metal obstacles.

Four wireless channels are available so one silage truck can receive signals from up to four harvesters.

Buttons and controls:



- 1) Use the included charge cord to **charge the internal battery**. A full charge will take 8+ hours. When charging, the indicator light will flash red. When a full charge is reached, the indicator light will flash green. The wireless box can also be used with a dead battery if it's plugged into power.

- 2) **Mount the box** Inside the truck or tractor.



Figure 1. Typical dash mounting location



Figure 2. A RAM X-mount can also be used

- 3) **Turn the box on** by pressing the On button. The indicator light will be green if the battery is charged, or yellow if the battery needs charging. If nothing happens when you press ON, plug the wireless box into power.
- 4) **Set the box to the correct signal channel** by pressing the appropriate channel button. To receive signal from the harvester, the Channel on the wireless box **MUST match** the Channel on the Collab control box in the harvester.

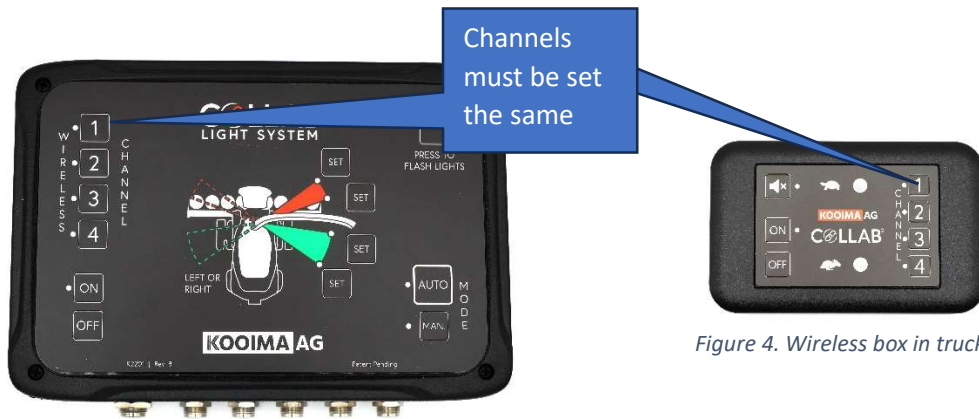
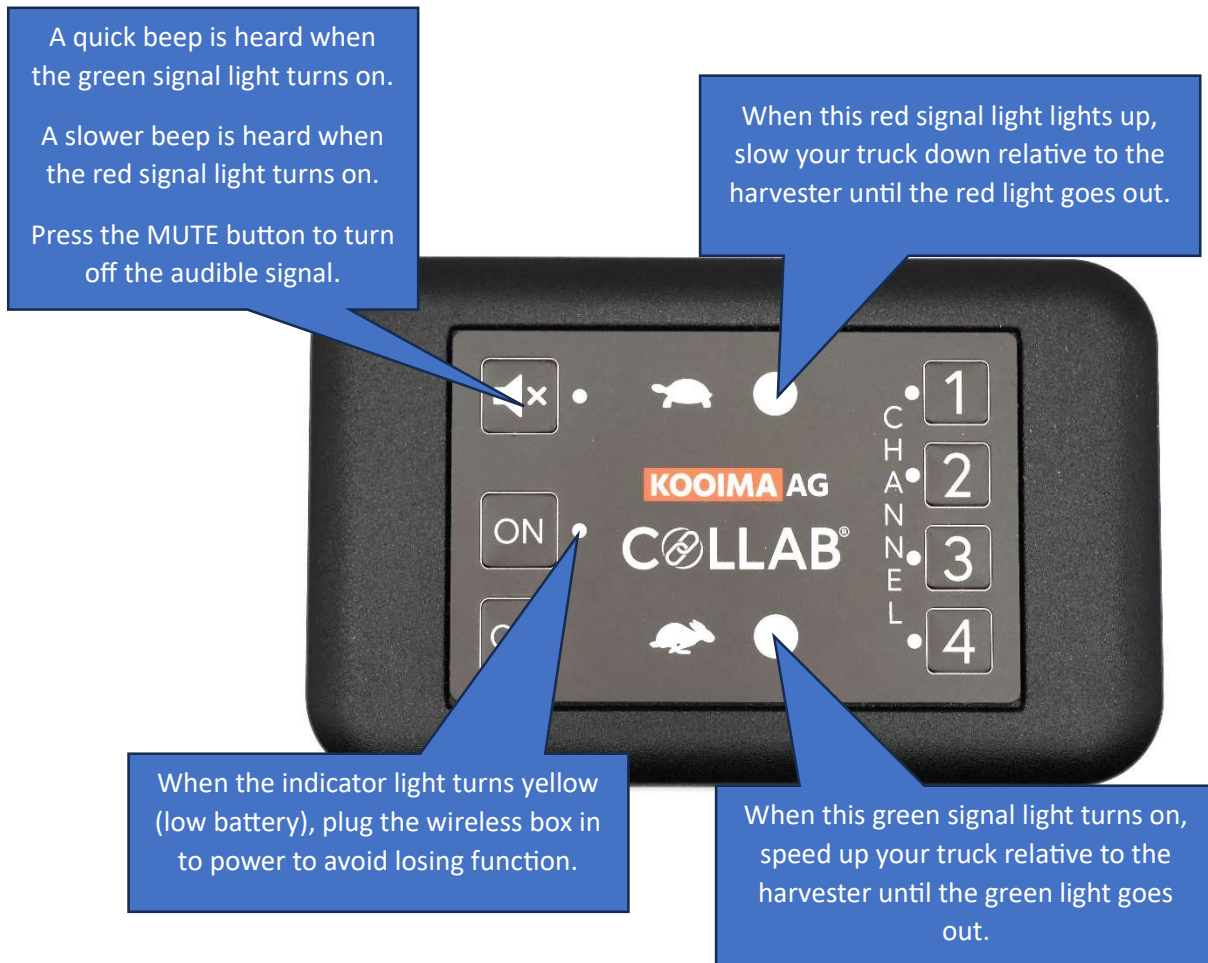


Figure 3. Controller in Harvester

Figure 4. Wireless box in truck

- 5) **Operation:** Wireless box is now ready to use. When you approach the harvester, the wireless box will automatically begin to receive signal from the harvester, as long as the channels match. If the harvester has Collab signal lights installed on the outside of it, the wireless box's lights will match the harvester's lights as they turn off and on.



- 6) If you haul silage for multiple harvesters, change to the channel of the appropriate harvester as you approach the harvester.

If you have any questions or concerns about this wireless box, call Kooima Ag at 800-522-8874.